

(1/4)
TYP.

$(\Phi 19 \frac{7}{8})$

2X 40°

60°

2X (11 1/8)

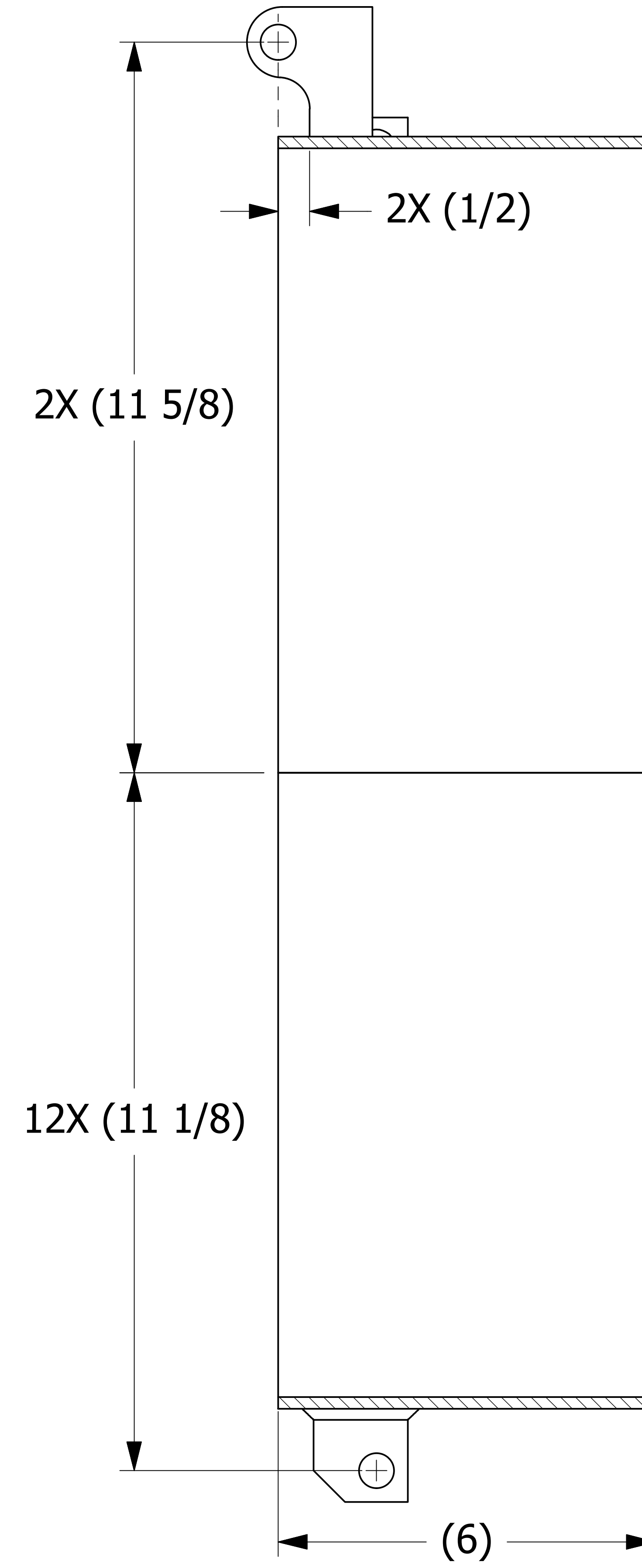
30°

$(\Phi 20 \frac{1}{4})$

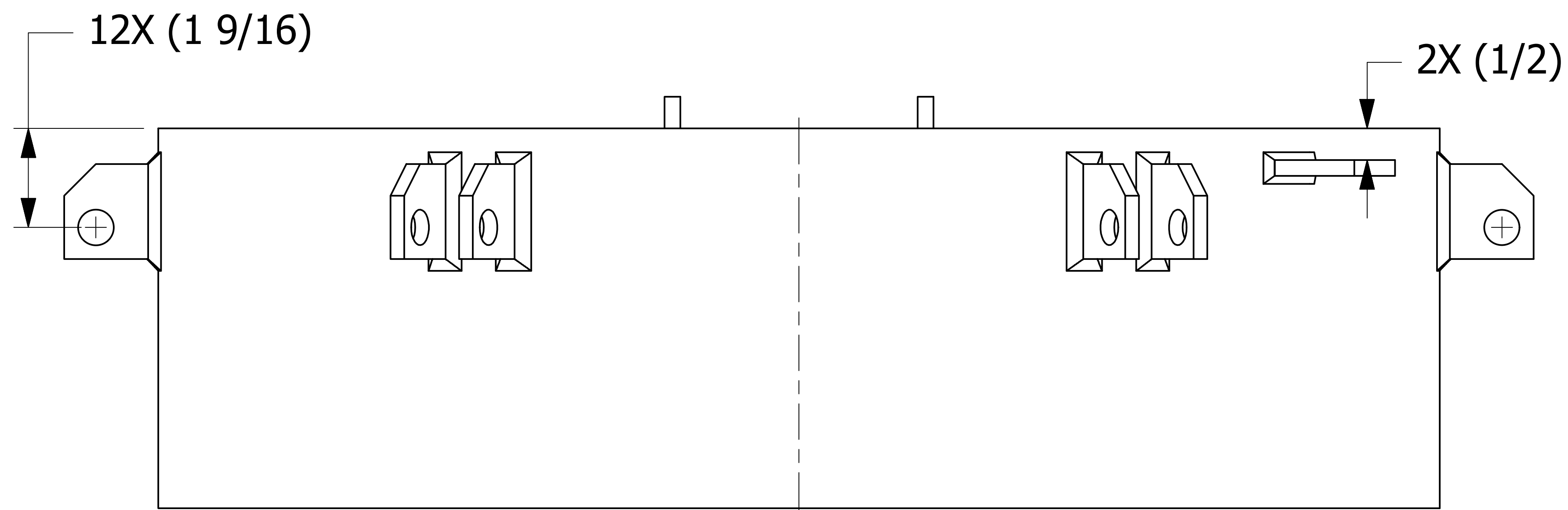
6X (1)

2X (1)

3



SECTION B-B



UNLESS OTHERWISE SPECIFIED DIMENSIONAL TOLERANCES		DRAWN BY:	CHL
FRACTIONAL:	$\pm 1/16$	CHECKED BY:	ACC
X.XX:	$\pm .06$	PROTOTYPE DATE:	9/6/2006
X.XXX:	$\pm .015$	APPROVED FOR PRODUCTION BY:	ACC
ANGULAR:	$\pm 1^\circ$	PRODUCTION DATE:	3/24/2007
DEBURR ALL SHARP EDGES. ALL MACHINED SURFACES TO HAVE A 125 RMS FINISH UNLESS NOTED OTHERWISE.		SIZE:	E
THIRD ANGLE PROJECTION		DRAWING #:	22355

L	WEB	9/9/20	202009091334	WEB
REV	BY	DATE	REF #	PUB

PART NAME:		
PD NOZZLE ASSEMBLY		

MATERIAL:		304 SS
PROJECT #:		060823
SHEET #:	1 OF 1	SCALE: 3:4

PART #:	PD20HCRS
---------	----------